



sark prime   
NORTH MEADOWS  
extension

Villas That Speak the Language of Grandeur



[www.sarkprojects.in](http://www.sarkprojects.in)

Financed by: 

SARK PRIME NORTH MEADOWS EXTENSION | MOKILA

# LIVE BEYOND THE ORDINARY

---

Because life's too grand  
to be basic...





## PROJECT DETAILS

**200**

SQYD  
OF LAND

**3200**

SFT BUILT-  
UP AREA

**G+2**

FLOORS

**4BHK**

TRIPLEX  
VILLAS

**>30%**

SERENE  
SPACES



## Homes That Define Distinction \_\_\_\_\_

Premium Villas at *Sark Prime North Meadows Extension* strike the perfect balance between elegant living and green open spaces. With finest designs, prime location, and thoughtful features, these villas blend luxury with nature effortlessly. Step into a home that inspires, pampers, and truly stands apart.

# Project Highlights

---

- Landscaped Gardens
- Modern Street Lighting
- Sewerage Treatment Plant
- All around Solar Fencing
- Lift Provision in each villa
- Underground Cabling
- CC Roads with Sidewalks
- Tree Lined Vistas
- Round the clock security
- Home Theatre in each villa
- 100 % Power Back-up
- And Many More...

# The Floorplans

## EAST FACING FLOOR PLAN



Ground Floor



First Floor



Second Floor

WEST FACING FLOOR PLAN



Ground Floor



First Floor



Second Floor

# The Gallery



*Disclaimer: The images shown in this brochure are for representation purposes only. The actual project may vary in appearance & design. These visuals are intended to provide a general idea and should not be considered exact depictions of the final development.*

# The Clubhouse



- Air Condition Gymnasium
- Badminton Court
- Indoor games
- Swimming Pool
- Children Recreation Area
- +Many More....
- Banquet Hall
- Lounge

# Location

05 Mins

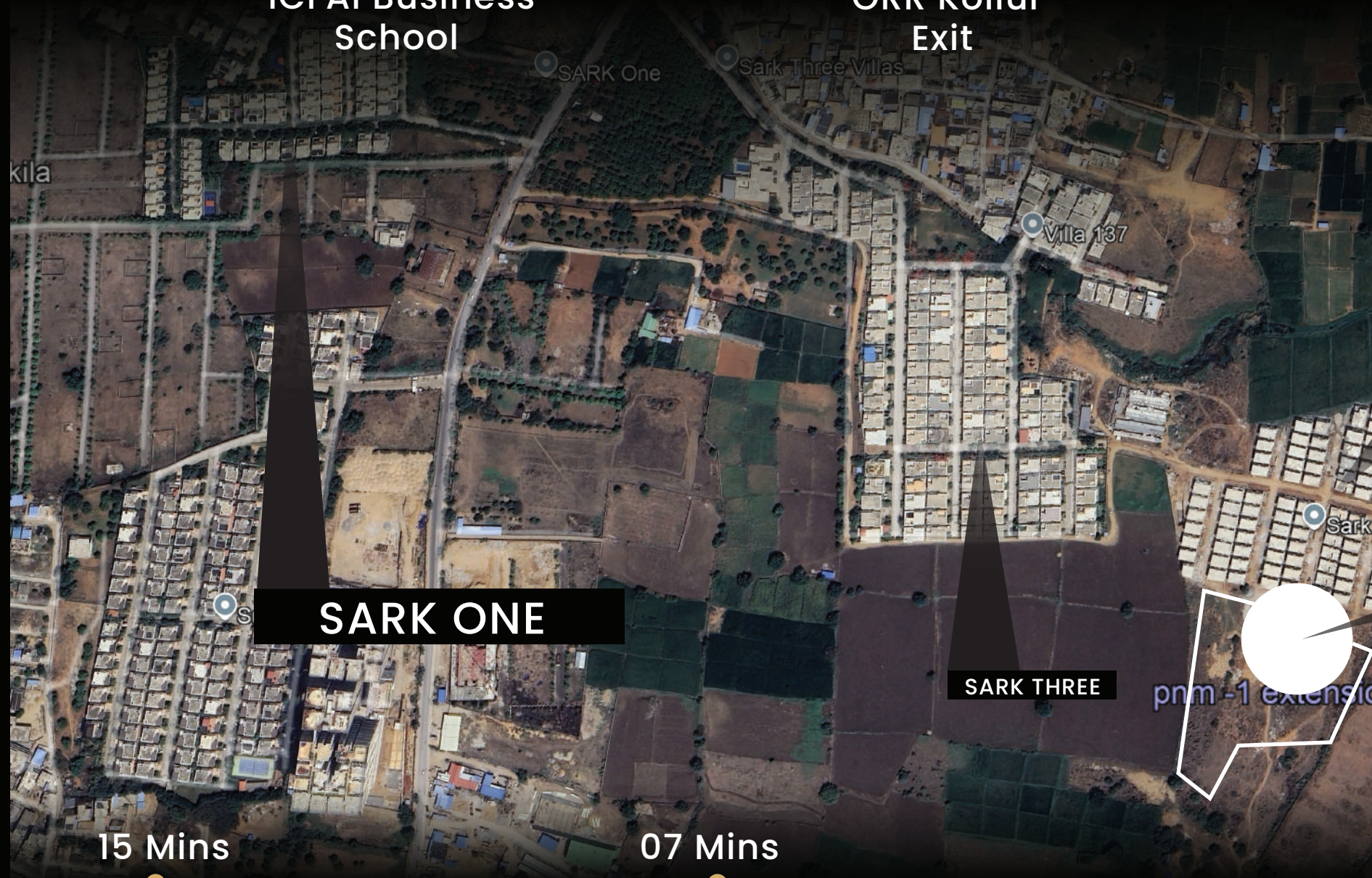
Indus Int'l  
School

12 Mins

ICFAI Business  
School

09 Mins

ORR Kollur  
Exit



SARK ONE

SARK THREE

pnm -1 extension

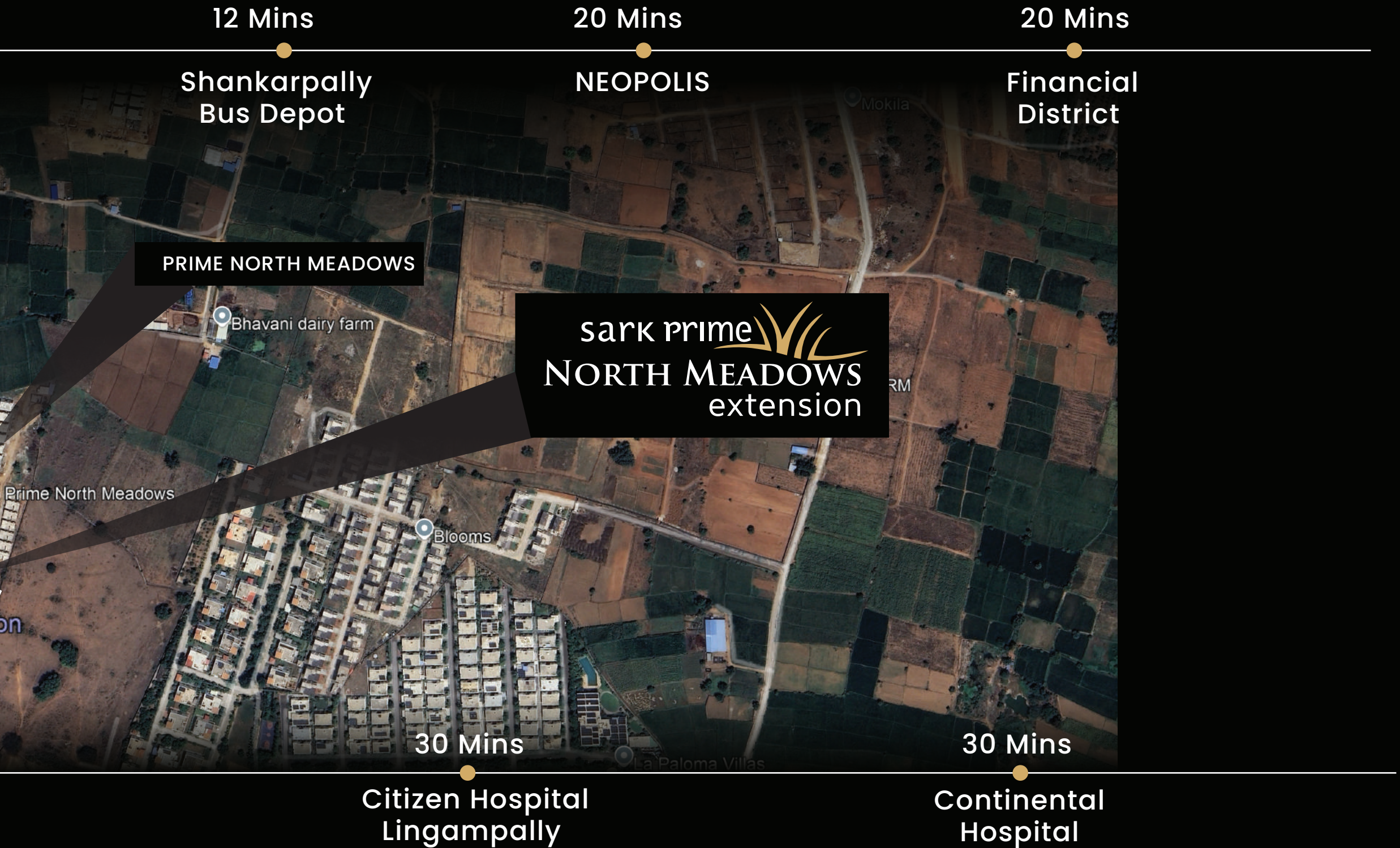
15 Mins

The Gaudium  
School

07 Mins

Edunaganapally  
Railway Station Hub

# Guide



# Project Specifications

## **Foundation / Framed Structure**

Foundation with R.C.C. M20 grade concrete design.

## **Super Structure**

Quality brick work in Cement Mortar.

## **Plastering**

Internal walls & Ceiling- Double coat cement plastered surface with smooth finish External walls – Double coat sand faced cement plastering with water proofing compound and painted with weather proof cement paint.

## **Parking Area**

Cement motor finish

## **Balconies**

Clay or ceramic tiles

## **Doors and Windows**

Flush doors with satin finish or Duco paint on both sides with wood frame for the main door & other doors.

Window frames & shutter in UPVC, with glass panels & provision for mosquito net.

## **Kitchen**

Polished granite platform, and 2' dado above Kitchen Platform.

## **Sanitary and Plumbing Works**

American Standard or Jaguar or Hindware or Equivalent sanitary and CP fittings. Wash basin with hot and cold shower with mixer. Water line Provision for geysers in all toilets. Dado up to 1 meter in dry area & 2 meter in wet area with branded Tiles.

## **Painting**

External: Synthetic Spray Plaster / Exterior emulsion paints of Asian / ICI make

**Internal:** Smooth finish with good quality putty over a coat of primer finished with two coats of acrylic emulsion paint

**Servant Quarters & Service Areas:** Two coats of acrylic OBD over one coat of paint

## **Electrical**

Concealed Power Cables in PVC conduits. Power outlet for air-conditioners in all bedrooms, living, dining & family area. Power plug for cooking range, chimney, refrigerator, microwave ovens, mixer grinder in kitchen etc.

## **Backup Power:**

HT line connection with 100% power back up through generator 3 Phase supply for each House and individual meter boards.

## **Water Supply Piping**

Superior quality HDPE piping. Centralized hydro pneumatic water supply system, with water treatment plant, which avoids overhead tanks and sumps in the house.



At ***Sark Prime North Meadows Extension***, life unfolds amidst serene treeline vistas and beautifully landscaped gardens. Stroll, unwind, and soak in the calm away from city chaos. The dedicated children's play area brings joy and safe adventures for little ones. It's a lifestyle where nature, comfort, and happy moments come together

---



The Clubhouse at **Sark Prime Meadows Extension** is where leisure meets luxury. From lavish lounges and elegant banquet halls to a refreshing swimming pool and exciting indoor games, it's designed for unforgettable moments. Whether you're hosting, relaxing, or playing, every space elevates your everyday. Here, every day feels like a celebration.

---

# HHS

**100+**

*Professionals Committed  
to Excellence*

**5000+**

*Happy Faces and  
Counting*

# ST



**700+**

*Villas Delivered  
Successfully*

**27+**

*Projects Across  
Hyderabad*



Sark Projects India Pvt.Ltd,  
Plot No 192, 6th Floor, Above Cafe Coffee Day,  
Kondapur, Hyderabad-500084, Telangana, India.

**REACH US: 73530 36767**



Financed by: 

[www.sarkprojects.in](http://www.sarkprojects.in)

Scan the QR for Location

